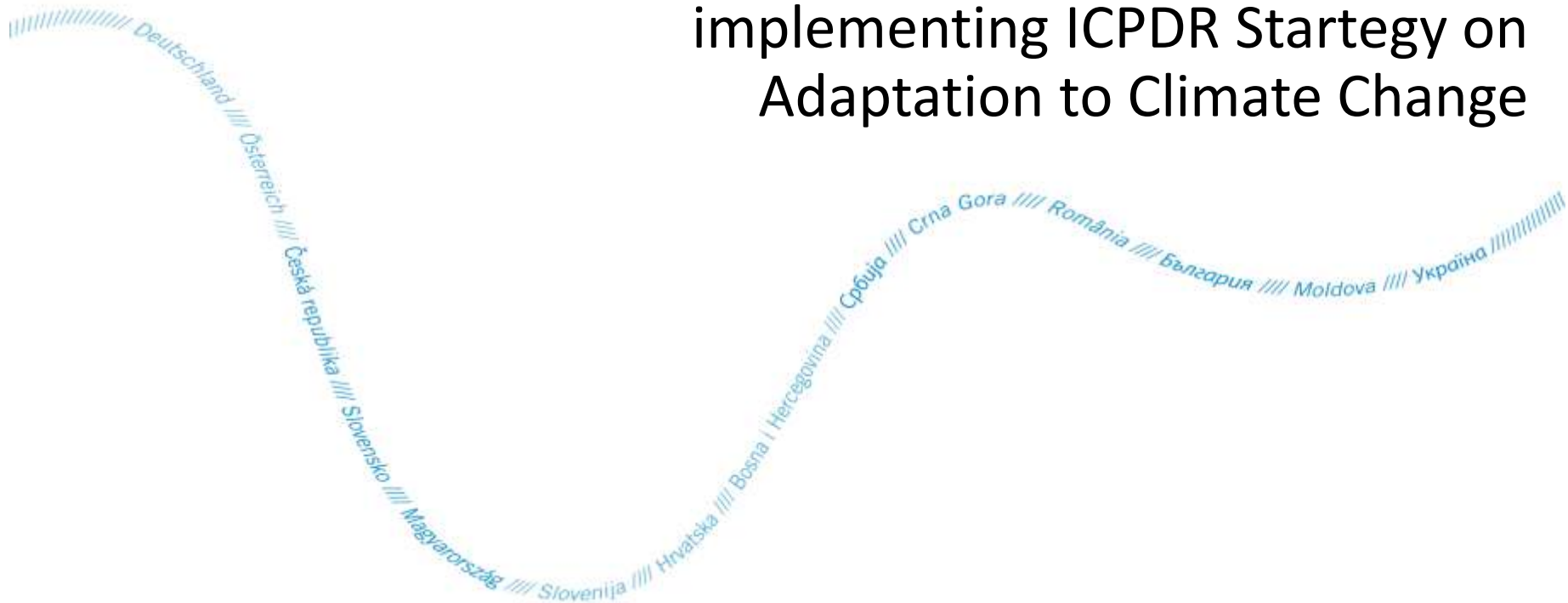


Europe Regional Process

INR.1.3. EU European examples and instruments for effective adaptation to climate change

15 April 2015, Gyeongju, Korea

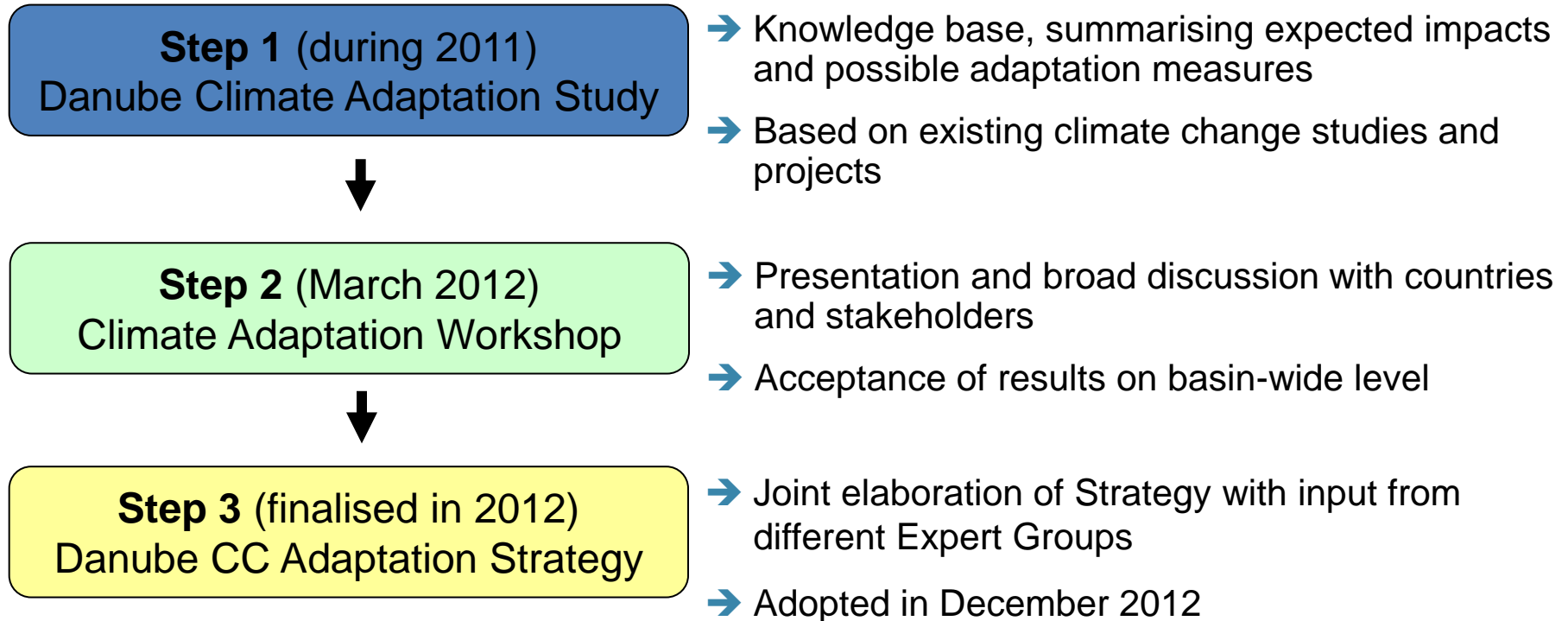
Lessons learned from developing and implementing ICPDR Strategy on Adaptation to Climate Change



Ivan Zavadsky
International Commission for the Protection of the Danube River (ICPDR)
ivan.zavadsky@unvienna.org | www.icpdr.org

Climate Change Adaptation Strategy

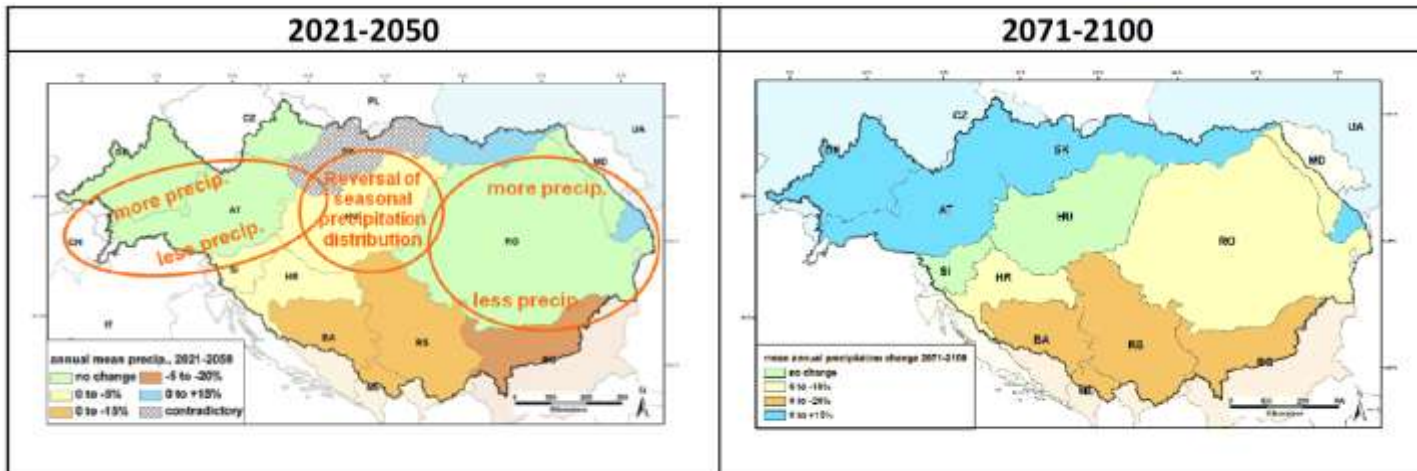
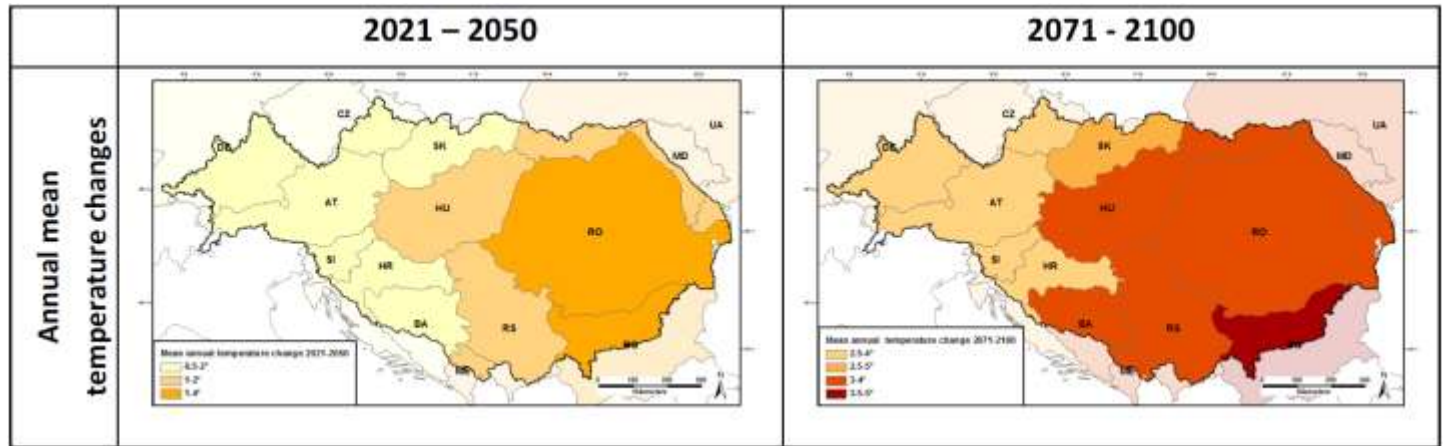
Main steps



Danube Climate Adaption Strategy

Climate change scenarios

Annual mean temperature changes



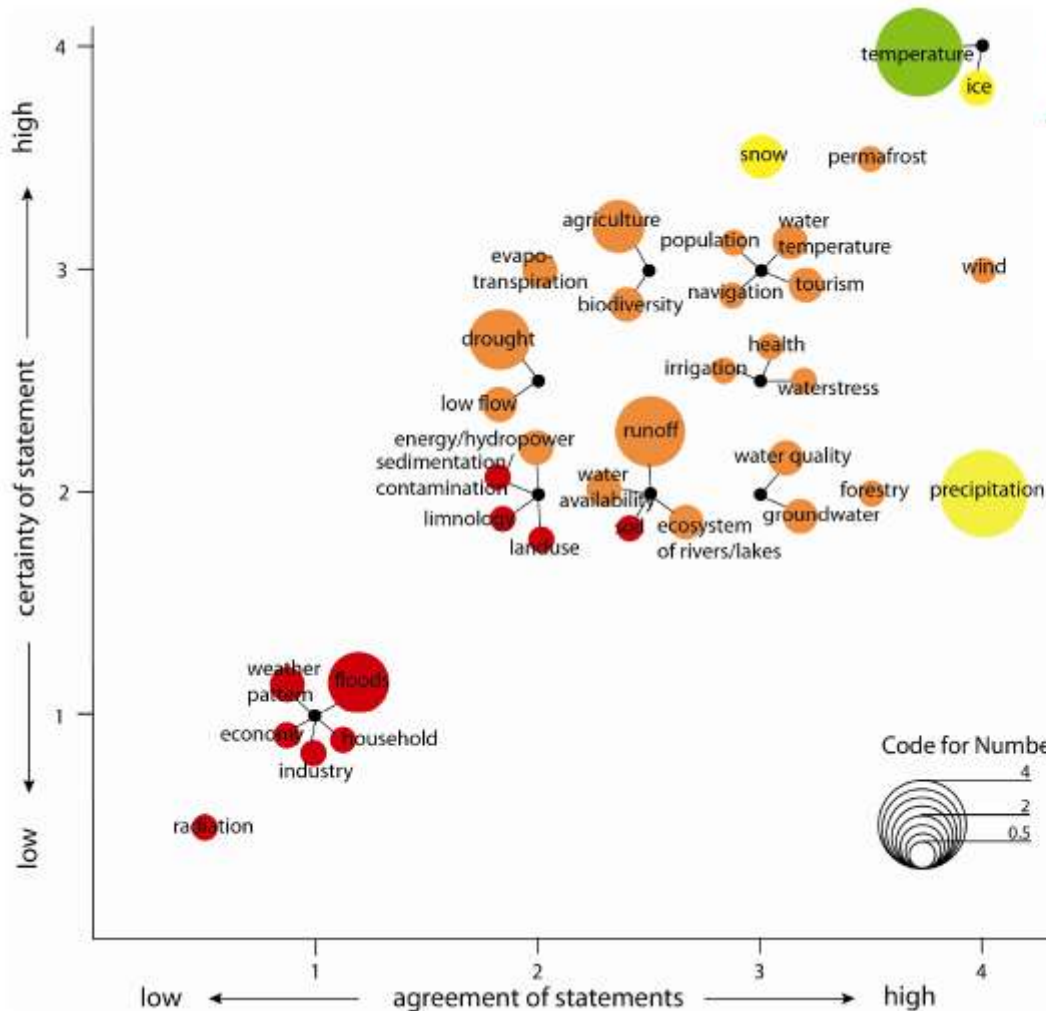
Changes in mean annual precipitation

Water-related impacts

- **Changes** in seasonal runoff patterns
- **Droughts**, low flow situations and **water scarcity** likely to become **more intense**, longer and more frequent
- Local and regional **increased heavy rainfall**, however, **no clear picture for changes in flood** magnitude and frequency
- **Changes for ecosystems** and biodiversity predicted with shifts of aquatic and terrestrial flora and fauna
- **Sectors** as agriculture, forestry, navigation and water related energy production **likely to suffer**

Water-related impacts

Uncertainty



Certainty

- very high
- high
- medium
- low

Number of projects	Code
1-7	0,5
8-14	1
15-21	1,5
22-28	2
29-35	2,5
36-42	3
43-49	3,5
> 50	4

Conclusions

- **Joint understanding** (i.e. on scenarios and related impacts) and **shared knowledge base** is essential for **joint decision making** in a trans-boundary basin
- Building on what we have – making **best use of existing structures** and water management instruments and **mainstreaming of adaptation**
- Coordination requirements – climate change is cross-cutting issue, requiring **interdisciplinary approach**
- Dealing with **uncertainty** – not all problems can be solved immediately, suggesting **step-wise and adaptative approach**
- Time horizon – not forget to address **other socio-economic developments** which might have even bigger impact than climate change itself
- It`s about **getting on the right track** – „don`t let the perfect be the enemy of the good“
- Clear **political committment is crucial!**

Thank you for your kind attention!

For more information please consult the ICPDR website

<http://www.icpdr.org>

ICPDR Secretariat / Vienna International Centre, D0412 / P.O. Box 500 / 1400 Vienna / Austria
Phone +43 1 26060-5738 / Fax +43 1 26060-5895 / icpdr@unvienna.org / www.icpdr.org

